

KETJUNKIRISTIMET



KONAFLEX[↑]OY

Pyymosantie 4, 01720 VANTAA
puh. 09-2532 3100
fax 09-2532 3177

Hermiankatu 6 G, 33720 TAMPERE
puh. 09-2532 3190
fax 03-318 0344

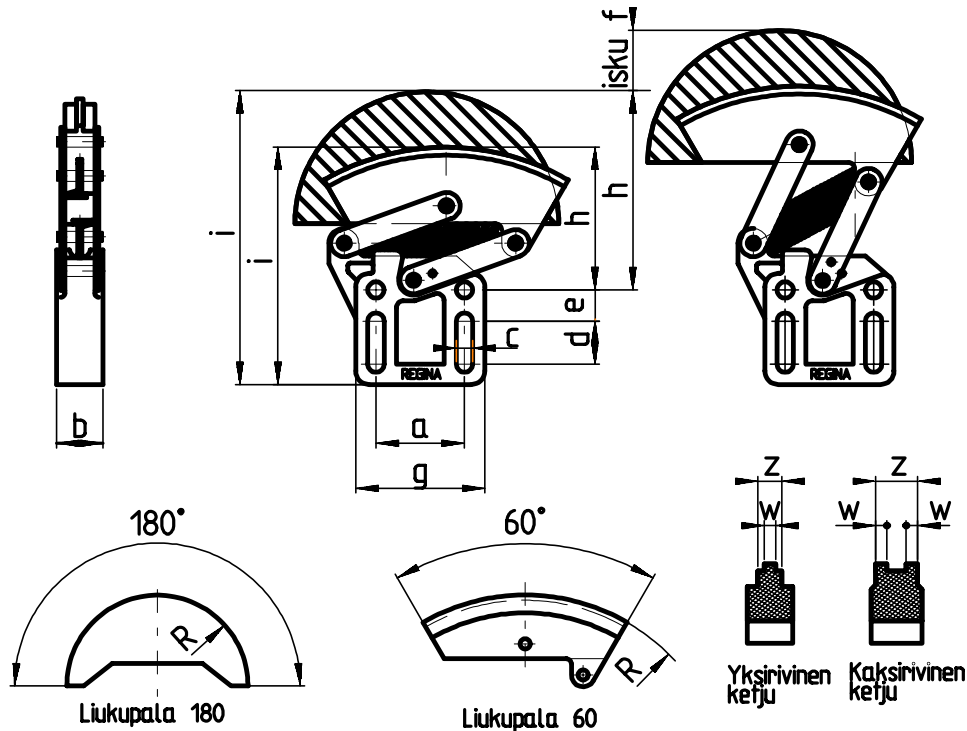
e-mail: konaflex@konaflex.fi

Internet: www.konaflex.fi

REGINA CRT-KETJUNKIRISTIN

Ketjun venyessä sen kiristystarve kasvaa. Reginan **CRT**-kiristimillä saadaan aikaiseksi automaattinen kiristys yksinkertaisella jousikuormituksella. Rakenteensa ansiosta **CRT**-kiristin säilyttää kiristysvoimansa koko kiristysmatkan ajan.

Varastokoot ovat saatavana mustilla liukupaloilla 45, 90 tai 180 asteen kulmilla. Kiristimeen on merkitty ketjun kulkusuunta.

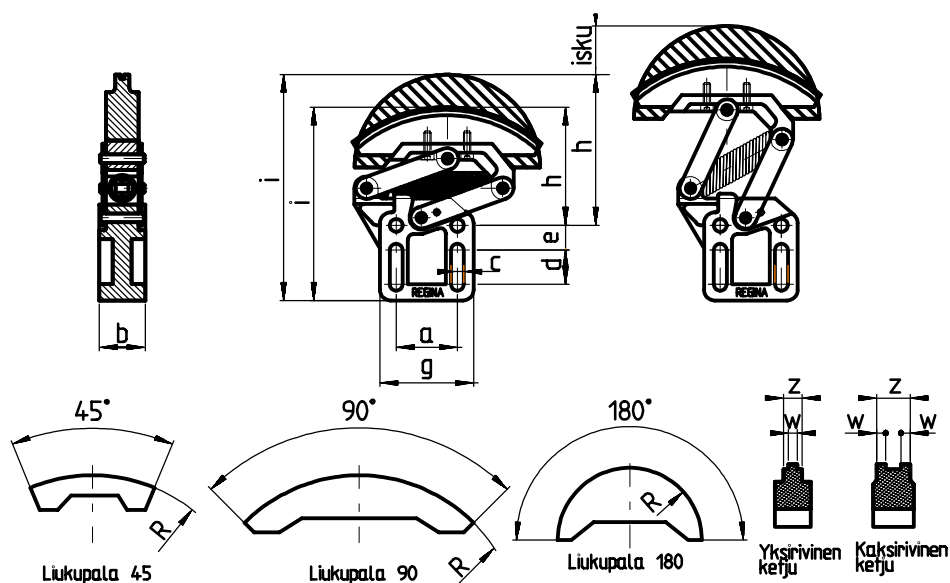


Huomio, että erikulmaisilla liukupaloilla eri h ja i mitat.

CRT 0

| Ketju ISO | Kiristintyyppi | | Liukupala | | | | | Kiristin | | | | | | | Voima kg |
|--------------|-------------------|-----------|-----------|---------|---------|---------|---------|----------|---------|---------|---------|---------|---------|---------|-------------|
| | Ketju (Regina) | Liukupala | R mm | h mm | i mm | w mm | z mm | a mm | b mm | c mm | d mm | e mm | f mm | g mm | |
| 05B1 | 105 | 60 | 90 | 61.5 | 95 | 2.7 | 16 | 38 | 24 | 6.5 | 16. | 9.2 | 28 | 53 | 8 |
| | | 180 | 50 | 85 | 117.5 | 5 | | | | | | | | | |
| 06B1 | 121 | 60 | 90 | 61.5 | 95 | 4.2 | 16 | 38 | 24 | 6.5 | 16. | 9.2 | 28 | 53 | 8 |
| | | 180 | 50 | 85 | 117.5 | 5 | | | | | | | | | |
| 06C1 | A35 | 60 | 90 | 61.5 | 95 | 7.0 | 16 | 38 | 24 | 6.5 | 16. | 9.2 | 28 | 53 | 8 |
| | | 180 | 50 | 85 | 117.5 | 5 | | | | | | | | | |
| 08B1 | 126 | 60 | 90 | 61.5 | 95 | 8.5 | 16 | 38 | 24 | 6.5 | 16. | 9.2 | 28 | 53 | 8 |
| | | 180 | 50 | 85 | 117.5 | 5 | | | | | | | | | |
| 08A1 | A40 | 60 | 90 | 61.5 | 95 | 8.5 | 16 | 38 | 24 | 6.5 | 16. | 9.2 | 28 | 53 | 8 |
| | | 180 | 50 | 85 | 117.5 | 5 | | | | | | | | | |
| 10B1 | 136 | 60 | 90 | 61.5 | 95 | 11.0 | 16 | 38 | 24 | 6.5 | 16. | 9.2 | 28 | 53 | 8 |
| | | 180 | 50 | 85 | 117.5 | 5 | | | | | | | | | |
| 12B1 | 140 | 60 | 90 | 61.5 | 95 | 2.5 | 8.2 | 38 | 24 | 6.5 | 16. | 9.2 | 28 | 53 | 8 |
| | | 180 | 50 | 85 | 117.5 | 5 | | | | | | | | | |
| 05B2 | 205 | 60 | 90 | 61.5 | 95 | 4.2 | 14 | 38 | 24 | 6.5 | 16. | 9.2 | 28 | 53 | 8 |
| | | 180 | 50 | 85 | 117.5 | 5 | | | | | | | | | |
| 06B2 | 221 | 60 | 90 | 61.5 | 95 | 6.6 | 20 | 38 | 24 | 6.5 | 16. | 9.2 | 28 | 53 | 8 |
| | | 180 | 50 | 85 | 117.5 | 5 | | | | | | | | | |
| 06C2 | A35-2 | 60 | 90 | 61.5 | 95 | 8.0 | 25.5 | 38 | 24 | 6.5 | 16. | 9.2 | 28 | 5 | 8 |
| | | 180 | 50 | 85 | 117.5 | 3 | | | | | | | | | |
| 08B2 | 226 | 60 | 90 | 61.5 | 95 | | | 38 | 24 | 6.5 | 16. | 9.2 | 28 | 53 | 8 |
| | | 180 | 50 | 85 | 117.5 | | | | | | | | | | |
| 08A2 | A40-2 | 60 | 90 | 61.5 | 95 | | | 38 | 24 | 6.5 | 16. | 9.2 | 28 | 53 | 8 |
| | | 180 | 50 | 85 | 117.5 | | | | | | | | | | |
| 10B2 | 236 | 60 | 90 | 61.5 | 95 | | | 38 | 24 | 6.5 | 16. | 9.2 | 28 | 5 | 8 |
| | | 180 | 50 | 85 | 117.5 | | | | | | | | | | |
| 10A2 | A50-2 | 60 | 90 | 61.5 | 95 | | | 38 | 24 | 6.5 | 16. | 9.2 | 28 | 5 | 8 |
| | | 180 | 50 | 85 | 117.5 | | | | | | | | | | |

REGINA CRT-KETJUNKIRISTIN



Huomio, että erikulmaisilla liukupaloilla eri h ja i mitat.

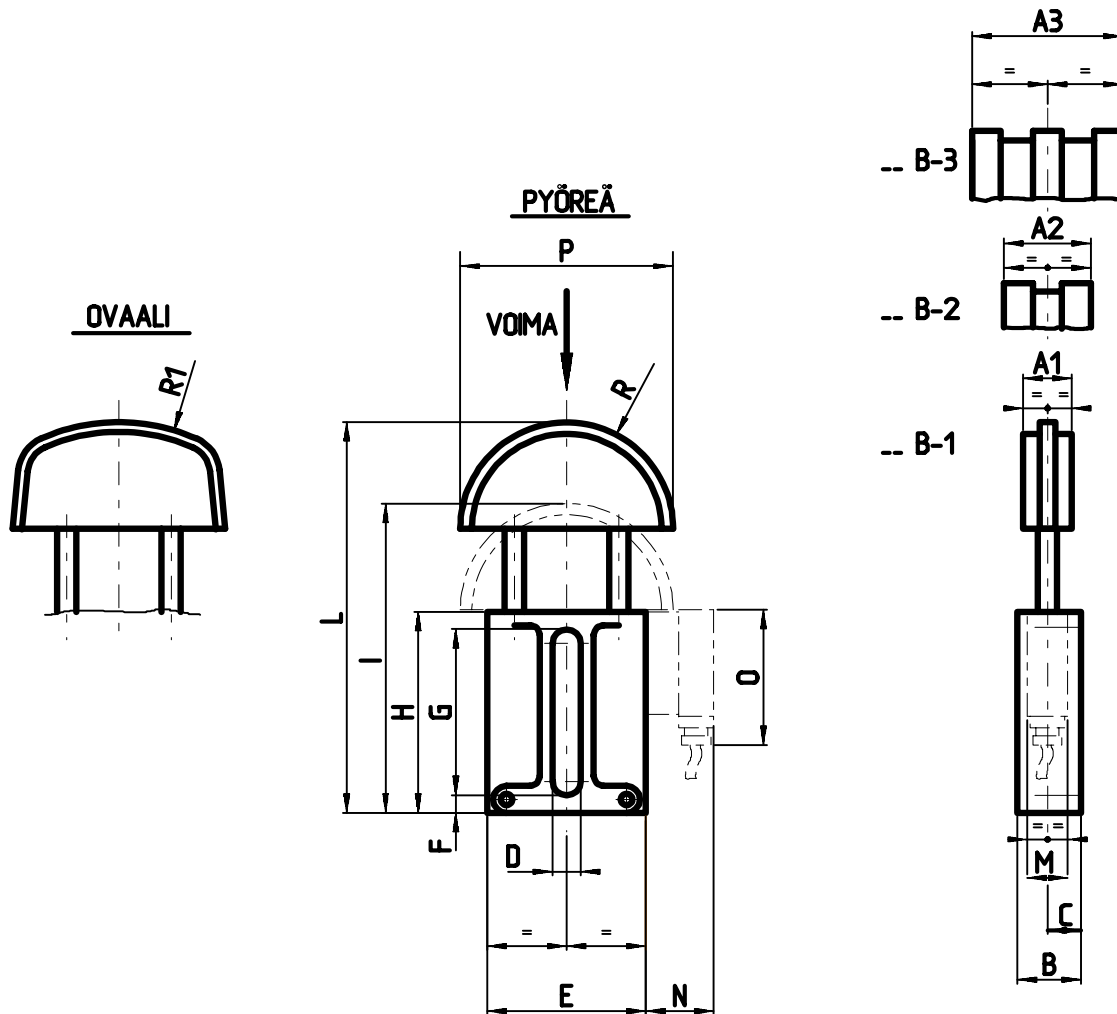
CRT 1

| Ketju ISO | Kiristintyyppi | | Liukupala | | | | | Kiristin | | | | | | | Voima |
|-----------|----------------|-----------|-----------|----------|----------------|------|------|----------|------|------|------|------|------|------|-------|
| | Ketju (Regina) | Liukupala | R mm | h mm | i mm | w mm | z mm | a mm | b mm | c mm | d mm | e mm | f mm | g mm | kg |
| 06B1 | 121 | 45 | 170 | 73 | 106.5 | | | | | | | | | | |
| 06C1 | A35 | 90 180 | 95 62 | 78 98 | 111.5 131.5 | 4.2 | 10.5 | 38 | 26 | 6.5 | 16.5 | 9.2 | 38 | 53 | 6 |
| 08B1 | 126 | 45 | 170 | 73 | 106.5 | | | | | | | | | | |
| 08A1 | A40 | 90 180 | 95 62 | 78 98 | 111.5 131.5 | 7.0 | 16 | 38 | 26 | 6.5 | 16.5 | 9.2 | 38 | 53 | 6 |
| 10B1 | 136 | 45 | 170 | 73 | 106.5 | | | | | | | | | | |
| 10A1 | A50 | 90 180 | 95 62 | 78 98 | 111.5 131.5 | 8.5 | 19 | 38 | 26 | 6.5 | 16.5 | 9.2 | 38 | 53 | 12 |
| 12B1 | 140 | 45 | 170 | 73 | 106.5 | | | | | | | | | | |
| 12A1 | A60 | 90 180 | 95 62 | 78 98 | 111.5 131.5 | 11 | 19 | 38 | 26 | 6.5 | 16.5 | 9.2 | 38 | 53 | 12 |
| 06B2 | 221 | 45 | 170 | 73 | 106.5 | | | | | | | | | | |
| 06C2 | A35-2 | 90 180 | 95 62 | 78 98 | 111.5 131.5 | 4.2 | 14 | 38 | 26 | 6.5 | 16.5 | 9.2 | 38 | 53 | 12 |
| 08B2 | 226 | 45 | 170 | 73 | 106.5 | | | | | | | | | | |
| 08A2 | A40-2 | 90 180 | 95 62 | 78 98 | 111.5 131.5 | 6.5 | 20 | 38 | 26 | 6.5 | 16.5 | 9.2 | 38 | 53 | 12 |

CRT 2

| Ketju ISO | Kiristintyyppi | | Liukupala | | | | | Kiristin | | | | | | | Voima |
|-----------|----------------|-----------|-----------|-----------|------------|------|------|----------|------|------|------|------|------|------|-------|
| | Ketju (Regina) | Liukupala | R mm | h mm | i mm | w mm | z mm | a mm | b mm | c mm | d mm | e mm | f mm | g mm | kg |
| 16B1 | 147 | 45 | 200 | 91 | 133 | | | | | | | | | | |
| 16A1 | A80 | 90 180 | 100 74 | 93 119 | 135 161 | 15 | 30 | 45 | 34 | 8,5 | 20 | 13 | 42 | 63 | 18 |
| 20B1 | 152 | 45 | 200 | 91 | 133 | | | | | | | | | | |
| 20A1 | A100 | 90 180 | 100 74 | 93 119 | 135 161 | 18 | 38 | 45 | 34 | 8,5 | 20 | 13 | 42 | 63 | 24 |
| 10B2 | 236 | 45 | 200 | 91 | 133 | | | | | | | | | | |
| 10A2 | A50-2 | 90 180 | 100 74 | 93 119 | 135 161 | 8.0 | 25.5 | 45 | 34 | 8,5 | 20 | 13 | 42 | 63 | 18 |
| 12B2 | 240 | 45 | 200 | 91 | 133 | | | | | | | | | | |
| 12A2 | A60-2 | 90 180 | 100 74 | 93 119 | 135 161 | 9.5 | 30 | 45 | 34 | 8,5 | 20 | 13 | 42 | 63 | 24 |
| 16B2 | 247 | 45 | 200 | 91 | 133 | | | | | | | | | | |
| 16A2 | A80-2 | 90 180 | 100 74 | 93 119 | 135 161 | 13.5 | 43.5 | 45 | 34 | 8,5 | 20 | 13 | 42 | 63 | 24 |

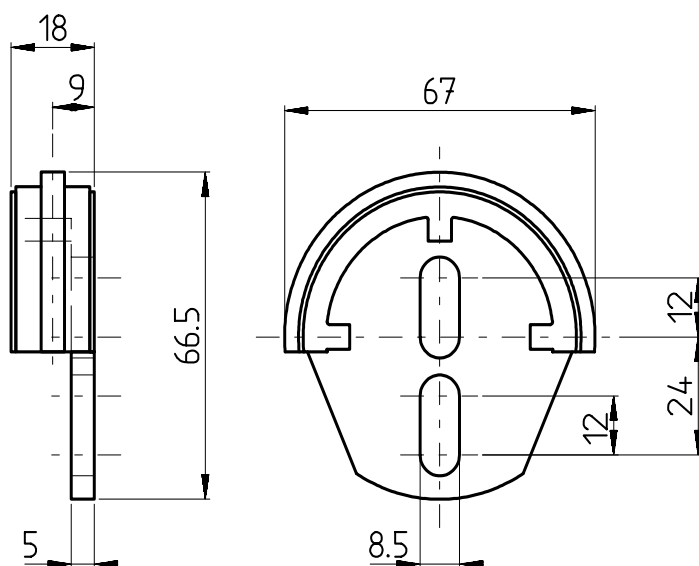
KETJUNKIRISTIN: TO



| Malli | Voima (N) min max | Ketjukoko | A1 | A2 | A3 | B | C | D | E | F | G | H | I | L | M | N | O | P | R | R1 |
|------------|----------------------|------------|----|----|------|----|------|------|------|---|----|-----|-----|-----|----|----|----|-----|----|-----|
| TO-1-3/8" | 130 250 | 3/8"x7/32" | 20 | 20 | 25 | 23 | 12.5 | 11 | 56.2 | 7 | 58 | 74 | 110 | 138 | | | | 70 | 35 | 100 |
| TO-1-1/2" | 130 250 | 1/2"x5/16" | 20 | 20 | 35 | 23 | 12.5 | 11 | 56.2 | 7 | 58 | 74 | 110 | 138 | | | | 70 | 35 | 100 |
| TO-1-5/8" | 130 250 | 5/8"x3/8" | 20 | 25 | 41.5 | 23 | 12.5 | 11 | 56.2 | 7 | 58 | 74 | 110 | 138 | | | | 70 | 35 | 100 |
| TO-2-5/8" | 180 420 | 5/8"x3/8" | 22 | 25 | 41.5 | 28 | 15 | 12.5 | 70.5 | 9 | 70 | 87 | 133 | 169 | | | | 90 | 45 | 120 |
| TO-2-3/4" | 180 420 | 3/4"x7/16" | 22 | 30 | 49 | 28 | 15 | 12.5 | 70.5 | 9 | 70 | 87 | 133 | 169 | | | | 90 | 45 | 120 |
| TO-3-1" | 300 650 | 1"x17 mm | 25 | 45 | 78 | 33 | 17.5 | 14.5 | 82 | 9 | 86 | 104 | 160 | 202 | 21 | 35 | 70 | 110 | 55 | 140 |
| TO-3-1"1/4 | 300 650 | 1"1/4x3/4" | 25 | 54 | 90 | 33 | 17.5 | 14.5 | 82 | 9 | 86 | 104 | 160 | 202 | 21 | 35 | 70 | 110 | 55 | 140 |
| TO-3-1"1/2 | 300 650 | 1"1/2x1" | 25 | 71 | 119 | 33 | 17.5 | 14.5 | 82 | 9 | 86 | 104 | 160 | 202 | 21 | 35 | 70 | 110 | 55 | 140 |

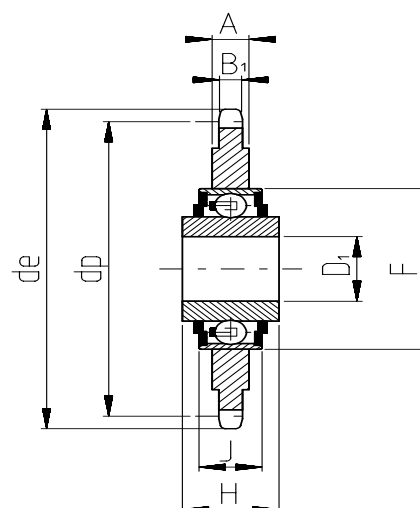
Mainitse pyöreä/ovaali tilattaessa

KETJUNKIRISTIN: GA



| Malli | Ketjukoko | Ketju |
|---------|-------------|-------|
| GA-3/8" | 3/8"x 7/32" | 06B-1 |
| GA-1/2" | 1/2"x5/16" | 08B-1 |
| GA-5/8" | 5/8"x 3/8" | 10B-1 |

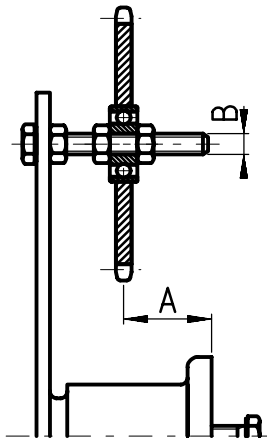
KUULALAAKEROIDUT TAITTO- JA KIRISTYSKETJUPYÖRÄT:CKP



Malli: CKP

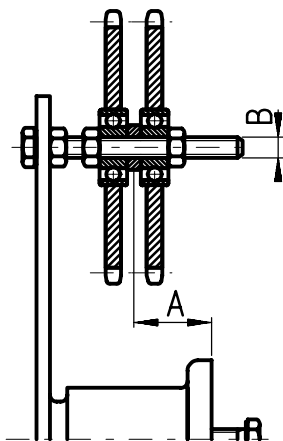
| Z | Ketju | de | dp | B1 | A | D1 | D1 TOL | F | H | J |
|----|------------|-------|--------|------|------|----|------------------|----|------|----|
| 23 | 8x1/8" | 62.2 | 58.75 | 2.8 | 7.0 | 16 | +0.130 +0.260 | 40 | 18.3 | 12 |
| 21 | 3/8"x7/32" | 67.6 | 63.91 | 5.3 | 5.3 | 16 | +0.130 +0.260 | 40 | 18.3 | 12 |
| 18 | 1/2"x1/8" | 79.4 | 73.14 | 3.0 | 7.0 | 16 | +0.130 +0.260 | 40 | 18.3 | 12 |
| 18 | 1/2"x3/16" | 79.4 | 73.14 | 4.5 | 7.0 | 16 | +0.130 +0.260 | 40 | 18.3 | 12 |
| 16 | 1/2"x5/16" | 69.9 | 65.1 | 7.2 | 7.2 | 16 | +0.130 +0.260 | 40 | 18.3 | 12 |
| 18 | 1/2"x5/16" | 78.0 | 73.14 | 7.2 | 7.2 | 16 | +0.130 +0.260 | 40 | 18.3 | 12 |
| 14 | 5/8"x3/8" | 78.2 | 71.34 | 9.1 | 9.1 | 16 | +0.130 +0.260 | 40 | 18.3 | 12 |
| 17 | 5/8"x1/8" | 93.3 | 86.39 | 9.1 | 9.1 | 16 | +0.130 +0.260 | 40 | 18.3 | 12 |
| 13 | 3/4"x7/16" | 87.8 | 79.59 | 11.1 | 11.1 | 16 | +0.130 +0.260 | 40 | 18.3 | 12 |
| 15 | 3/4"x7/16" | 99.8 | 91.63 | 11.1 | 11.1 | 16 | +0.130 +0.260 | 40 | 18.3 | 12 |
| 12 | 1"x17,02 | 109.7 | 98.14 | 16.2 | 16.2 | 20 | +0 -0,010 | 47 | 17.7 | 14 |
| 13 | 1"1/4x3/4" | 147.5 | 132.67 | 18.5 | 18.5 | 25 | +0 -0,010 | 52 | 21.0 | 15 |

KETJUNKIRISTIN: TEKS



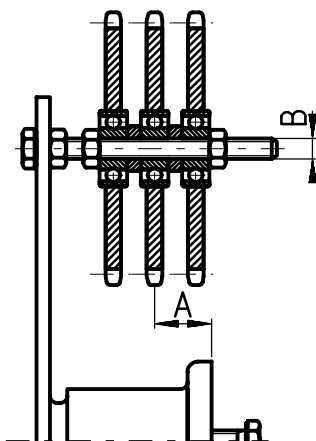
Yksirivinen

| Malli | Z | A | B | Paino (kg) |
|----------------------|----|--------|-----|------------|
| TEKS 3 3/8"x7/32" | 15 | 13-43 | M10 | 0.60 |
| TEKS 3 1/2"x5/16" | 15 | 13-43 | M10 | 0.65 |
| TEKS 5 5/8"x3/8" | 15 | 40-82 | M12 | 2.32 |
| TEKS 5 3/4"x7/16" | 15 | 40-82 | M12 | 2.55 |
| TEKS 6 1"x17,02 | 13 | 38-102 | M20 | 5.00 |
| TEKS 7 1"1/4x3/4" | 13 | 76-156 | M20 | 8.55 |
| TEKS 7 1"1/2x1" | 11 | 76-156 | M20 | 8.90 |



Kaksirivinen

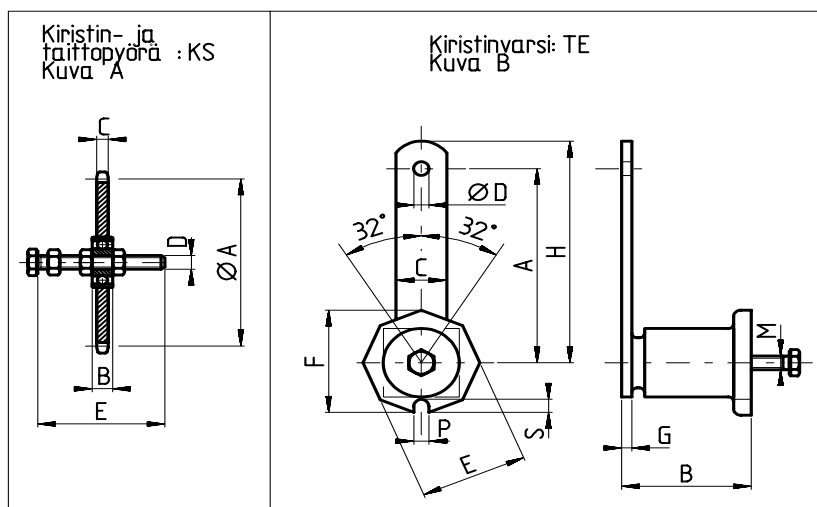
| Malli | Z | A | B | Paino (kg) |
|----------------------|----|-------|-----|------------|
| TEKS 3 3/8"x7/32" | 15 | 15-35 | M10 | 0.65 |
| TEKS 4 1/2"x5/16" | 15 | 17-33 | M10 | 1.15 |
| TEKS 5 5/8"x3/8" | 15 | 20-36 | M12 | 2.55 |
| TEKS 5 3/4"x7/16" | 15 | 22-44 | M12 | 3.00 |
| TEKS 6 1"x17,02 | 13 | 33-68 | M20 | 5.80 |
| TEKS 7 1"1/4x3/4" | 13 | 35-84 | M20 | 10.10 |
| TEKS 7 1"1/2x1" | 11 | 41-78 | M20 | 10.75 |



Kolmirivinen

| Malli | Z | A | B | Paino (kg) |
|----------------------|----|-------|-----|------------|
| TEKS 4 3/8"x7/32" | 15 | 19-30 | M10 | 0.95 |
| TEKS 5 1/2"x5/16" | 15 | 26-40 | M12 | 2.45 |
| TEKS 6 5/8"x3/8" | 15 | 33-66 | M20 | 4.95 |
| TEKS 6 3/4"x7/16" | 15 | 36-65 | M20 | 5.20 |
| TEKS 7 1"x17,02 | 13 | 48-71 | M20 | 9.40 |
| TEKS 7 1"1/4x3/4" | 13 | 53-66 | M20 | 11.70 |
| TEKS 7 1"1/2x1" | 11 | 65-77 | M20 | 12.70 |

KIRISTIN- JA TAITTOPYÖRÄ: KS



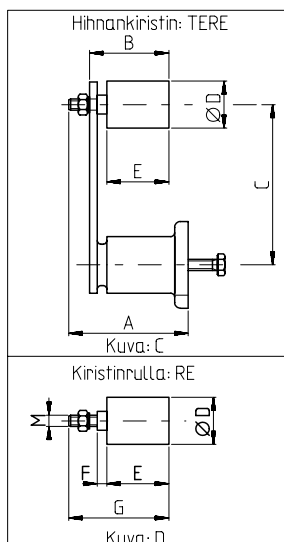
Kiristin- ja taittopyörä: KS (kuva A)

| Malli | Z | øA | B | C | D | E | Ketju DIN8187 | Paino (kg) |
|----------------|----|--------|----|------|-----|-----|------------------|---------------|
| KS 3/8"x7/32" | 15 | 45.81 | 9 | 5.7 | M10 | 60 | ISO-06B | 0.15 |
| KS 1/2"x5/16" | 15 | 61.08 | 9 | 7.2 | M10 | 60 | ISO-08B | 0.20 |
| KS 1/2"x5/16" | 15 | 61.08 | 12 | 7.2 | M12 | 80 | ISO-08B | 0.23 |
| KS 5/8"x3/8" | 15 | 76.36 | 12 | 9.1 | M12 | 80 | ISO-10B | 0.37 |
| KS 5/8"x3/8" | 15 | 76.36 | 15 | 9.1 | M20 | 120 | ISO-10B | 0.40 |
| KS 3/4"x7/16" | 15 | 91.63 | 12 | 11.5 | M12 | 80 | ISO-12B | 0.60 |
| KS 3/4"x7/16" | 15 | 91.63 | 15 | 11.5 | M20 | 120 | ISO-12B | 0.90 |
| KS 1"x17,02mm | 13 | 106.14 | 15 | 16.2 | M20 | 120 | ISO-16B | 1.30 |
| KS 1 1/4"x3/4" | 13 | 132.67 | 15 | 18.5 | M20 | 140 | ISO-20B | 2.05 |
| KS 1 1/2"x1" | 11 | 135.23 | 15 | 24.1 | M20 | 140 | ISO-24B | 2.40 |

Kiristinvarsi: TE (kuva B)

| Malli | A | B | C | øD | E | F | G | H | Voima (N) <0-32° | M | P | S | Paino (kg) |
|-------|-----|-----|----|------|-----|-----|----|-------|---------------------|-----|----|---|---------------|
| TE2 | 80 | 52 | 20 | 8.5 | 35 | 38 | 5 | 90 | 0-90 | M6 | 7 | 5 | 0.25 |
| TE3 | 100 | 63 | 25 | 10.5 | 46 | 48 | 5 | 112.5 | 0-140 | M8 | 7 | 6 | 0.45 |
| TE4 | 100 | 78 | 30 | 10.5 | 56 | 59 | 6 | 115 | 0-320 | M10 | 7 | 8 | 0.68 |
| TE5 | 130 | 108 | 50 | 12.5 | 72 | 76 | 8 | 155 | 0-820 | M12 | 10 | 8 | 1.95 |
| TE6 | 175 | 140 | 60 | 20.5 | 93 | 97 | 10 | 205 | 0-1500 | M16 | 12 | 8 | 3.70 |
| TE7 | 220 | 198 | 70 | 20.5 | 106 | 112 | 12 | 260 | 0-2400 | M20 | 12 | 8 | 6.50 |

HIHNANKIRISTIN: TERE



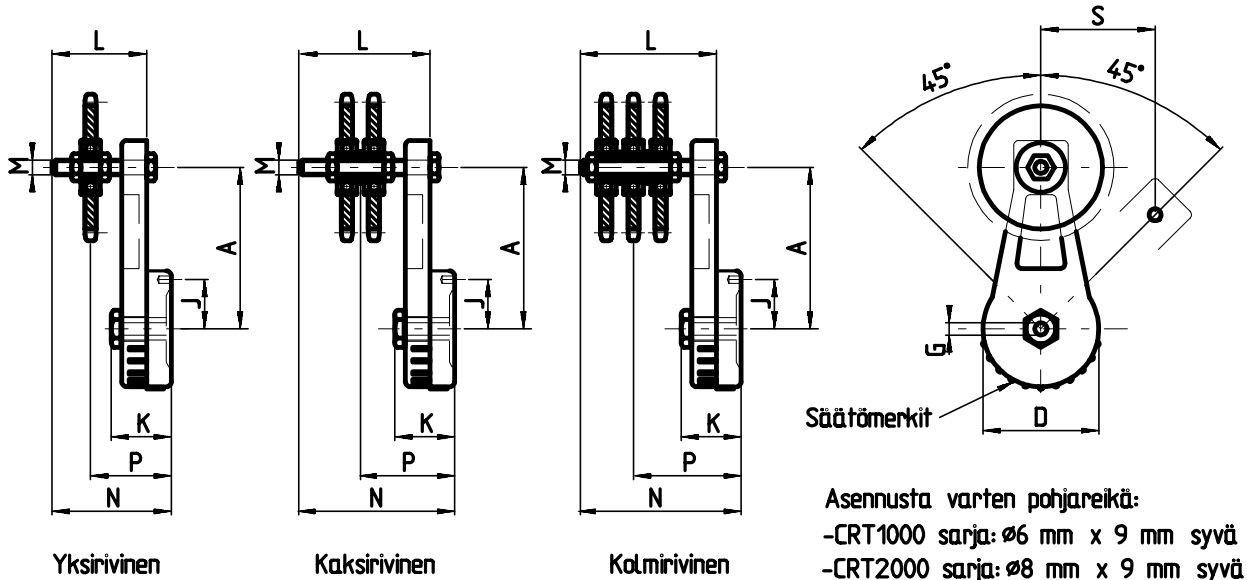
Hihnankiristin: TERE (kuva C) Varren mitoitus kuva B

| Malli | A | B | C | øD | E | Paino (kg) |
|--------|-----|-----|-----|----|-----|------------|
| TERE 2 | 61 | 43 | 80 | 30 | 35 | 0.32 |
| TERE 3 | 70 | 56 | 100 | 40 | 45 | 0.62 |
| TERE 4 | 88 | 57 | 100 | 40 | 45 | 0.85 |
| TERE 5 | 122 | 76 | 130 | 60 | 60 | 2.34 |
| TERE 6 | 158 | 109 | 175 | 80 | 90 | 4.90 |
| TERE 7 | 211 | 154 | 220 | 80 | 135 | 8.20 |

Kiristinrulla: RE (kuva D)

| Malli | E | F | G | øD | M | Paino (kg) |
|-------|-----|-----|-----|----|-----|------------|
| RE 2 | 35 | 3 | 51 | 30 | M8 | 0.07 |
| RE 3 | 45 | 6 | 67 | 40 | M10 | 0.17 |
| RE 4 | 45 | 6 | 67 | 40 | M10 | 0.17 |
| RE 5 | 60 | 7.5 | 89 | 60 | M12 | 0.39 |
| RE 6 | 90 | 9 | 127 | 80 | M20 | 1.20 |
| RE 7 | 135 | 7 | 167 | 80 | M20 | 1.70 |

MORSE CRT-KETJUNKIRISTIN



| Kiristin nr. | Kiristysmomentti Nm | Ketju koko ISO | Z | A | D | G | J | K | L | M | N | P | S |
|---------------------|---------------------|----------------|----|-------|----|----------|------|------|-----|----------|-----|--------|----|
| Yksirivinen | | | | | | | | | | | | | |
| CRT1106 | 8-18 | 06B-1 | 15 | 88.9 | 70 | 3/8" UNC | 29.5 | 35.5 | 60 | M10 | 75 | 40-63 | 63 |
| CRT1108 | 8-18 | 08B-1 | 15 | 88.9 | 70 | 3/8" UNC | 29.5 | 35.5 | 60 | M10 | 75 | 42-63 | 63 |
| CRT1110 | 8-18 | 10B-1 | 15 | 88.9 | 70 | 3/8" UNC | 29.5 | 35.5 | 80 | M10 | 95 | 43-83 | 63 |
| CRT2112 | 20-34 | 12B-1 | 15 | 101.6 | 92 | 1/2" UNC | 36.0 | 42.0 | 76 | 1/2" UNC | 94 | 50-80 | 72 |
| CRT2116 | 20-34 | 16B-1 | 13 | 101.6 | 92 | 1/2" UNC | 36.0 | 42.0 | 102 | 1/2" UNC | 120 | 58-100 | 72 |
| CRT2120 | 20-34 | 20B-1 | 13 | 101.6 | 92 | 1/2" UNC | 36.0 | 42.0 | 102 | 1/2" UNC | 120 | 61-100 | 72 |
| Kaksirivinen | | | | | | | | | | | | | |
| CRT1206 | 8-18 | 06B-2 | 15 | 88.9 | 70 | 3/8" UNC | 29.5 | 35.5 | 60 | M10 | 75 | 45-58 | 63 |
| CRT1208 | 8-18 | 08B-2 | 15 | 88.9 | 70 | 3/8" UNC | 29.5 | 35.5 | 60 | M10 | 75 | 49-56 | 63 |
| CRT1210 | 8-18 | 10B-2 | 15 | 88.9 | 70 | 3/8" UNC | 29.5 | 35.5 | 80 | M10 | 95 | 50-75 | 63 |
| CRT2212 | 20-34 | 12B-2 | 15 | 101.6 | 92 | 1/2" UNC | 36.0 | 42.0 | 76 | 1/2" UNC | 94 | 60-70 | 72 |
| CRT2216 | 20-34 | 16B-2 | 13 | 101.6 | 92 | 1/2" UNC | 36.0 | 42.0 | 102 | 1/2" UNC | 120 | 75-86 | 72 |
| Kolmirivinen | | | | | | | | | | | | | |
| CRT1306 | 8-18 | 06B-3 | 15 | 88.9 | 70 | 3/8" UNC | 29.5 | 35.5 | 60 | M10 | 75 | 50-53 | 63 |
| CRT1308 | 8-18 | 08B-3 | 15 | 88.9 | 70 | 3/8" UNC | 29.5 | 35.5 | 80 | M10 | 95 | 56-59 | 63 |
| CRT1310 | 8-18 | 10B-3 | 15 | 88.9 | 70 | 3/8" UNC | 29.5 | 35.5 | 80 | M10 | 95 | 59-66 | 63 |
| CRT2312 | 20-34 | 12B-3 | 15 | 101.6 | 92 | 1/2" UNC | 36.0 | 42.0 | 102 | 1/2" UNC | 120 | 70-85 | 72 |